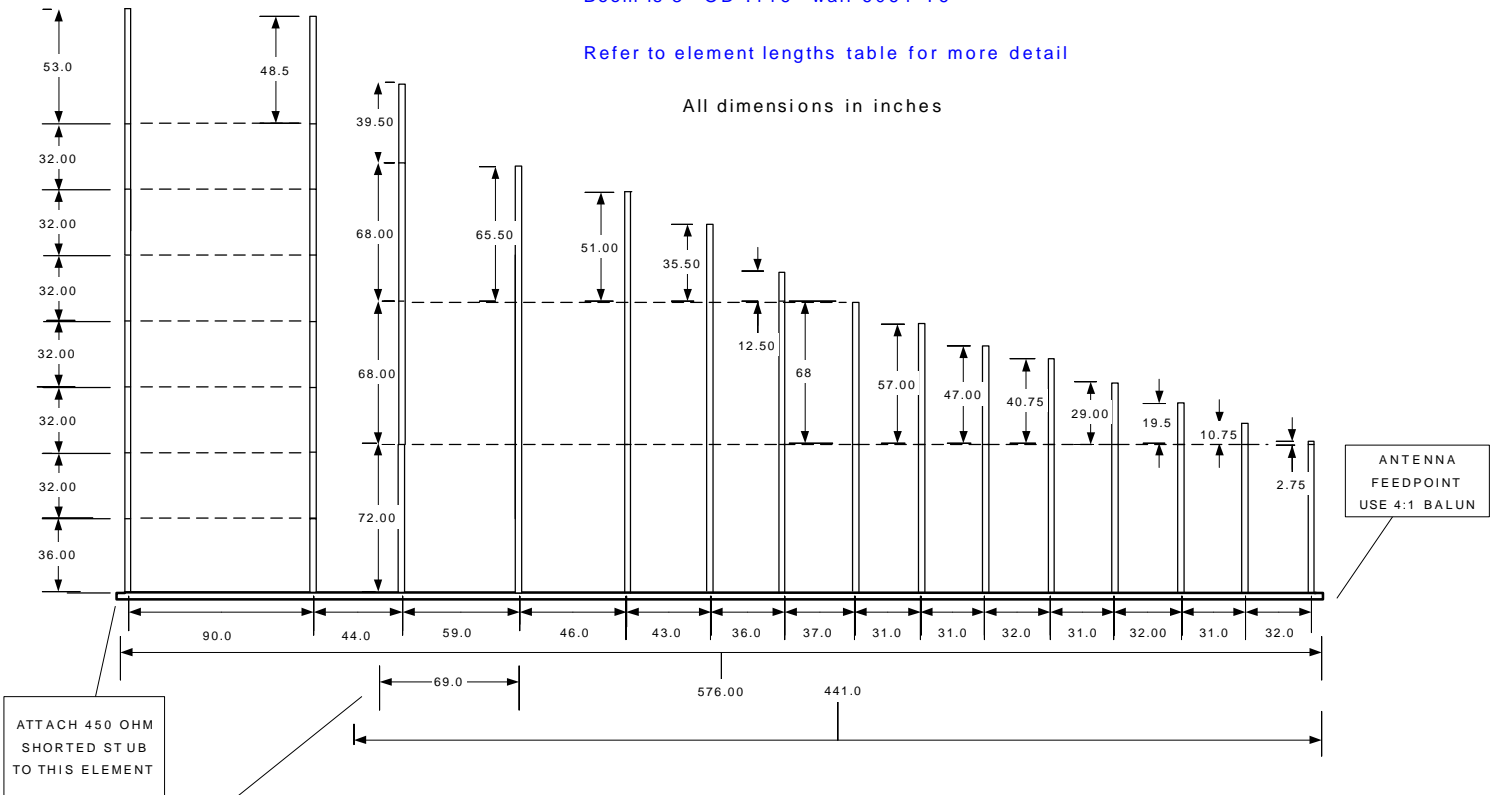


All elements are .058" thick wall 6063-T832 aluminum
 Telescoping elements have 4" overlap
 Boom is 3" OD .116" wall 6061-T6

Refer to element lengths table for more detail

All dimensions in inches



10-30 MHz 15 ELEMENT LOG PERIODIC LAYOUT

K8CU

Oct. 11, 1994

Revised July 10, 2004 - dimension corrections
 to boom and element spacing